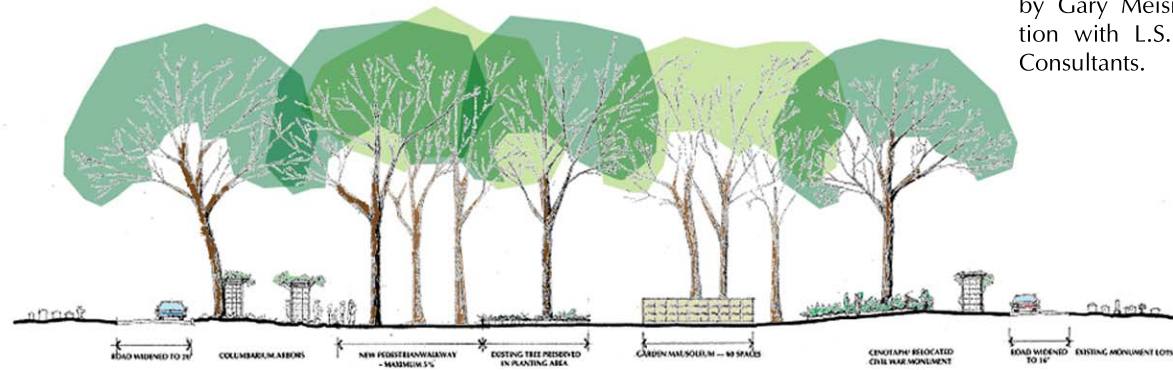
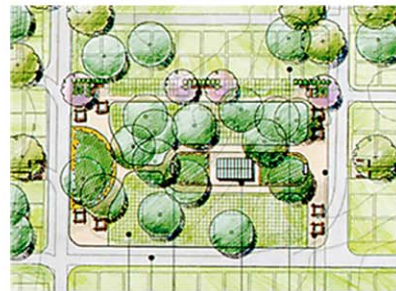


# CHESTNUT GROVE CEMETERY



The master plan for the Town of Herndon's Chestnut Grove Cemetery began with an overview of market and demand factors which should direct the future development of the cemetery, a detailed master plan for the types of interment options to be offered in the cemetery's two currently undeveloped sections, and a proforma and twenty-year capital improvement program which outlined the costs and potential revenue from the proposed development activities.

The plan is designed to be compatible with the regular geometry and rectilinear street and lot platting of the original historic portions of the cemetery. New construction will follow traditional patterns, but accommodate columbarium, garden and chapel mausoleum spaces, a new maintenance facility, and an office. Some existing roadways in full sections will be closed, allowing them to be redeveloped as urn garden lots, retaining the character of the older sections, while allowing for added capacity.



The Master Plan was prepared by Gary Meisner in collaboration with L.S. Sloan and LSG Consultants.

