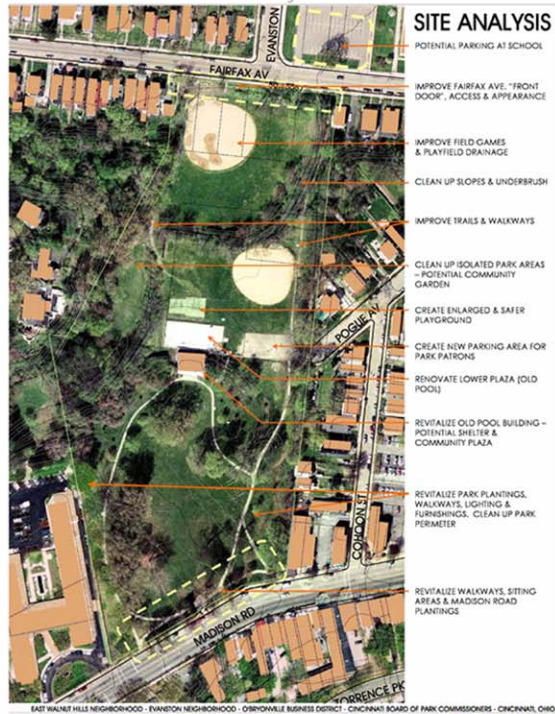


OWLS' NEST PARK MASTER PLAN PHASE I & II

Client: Owls' Nest Park Advisory Council, Cincinnati Park Board, Cincinnati Recreation Commission
Location: Cincinnati, Ohio
Size: 10 acres



Owls' Nest Park is a historic greenspace located on Cincinnati's Near East Side. A Concept Master Plan was created through a collaborative, community-authored process that included a series of public workshops involving the Cincinnati Park Board, the Cincinnati Recreation Commission, the East Walnut Hills Assembly, the O'Bryonville Business Association, and the Evanston Community Council. The Owls' Nest Park Advisory Council led this unique process.

A site analysis and contributions of community groups and agencies set goals for the plan. Key improvements included a park beatification program, the creation of two "Front Doors" to the Park on Fairfax Avenue and Madison Road, and Park building renovations. The plan also calls for development and renovation of field games areas, playgrounds, an educational nature area, trails and walks, and sitting areas. In addition, special elements will be added, including a clock tower, an international plaza, an Owls' Nest Park Fountain, and an Evanston Plaza.



The Owls' Nest Park planning process serves as a dynamic model for a publicly-authored, community-based master plan that makes the best use of the Park's public spaces, the neighborhood business district, and surrounding residential areas.

